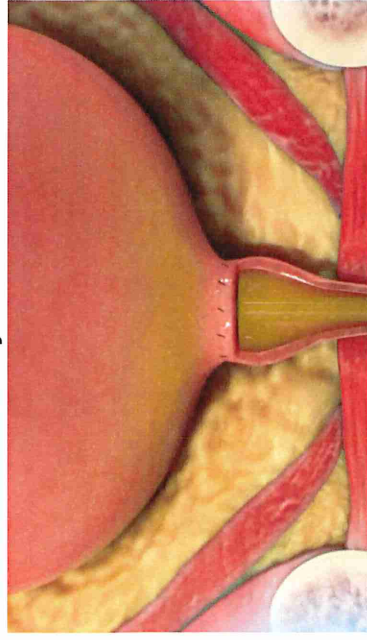


## What is the ProACT™ Therapy?

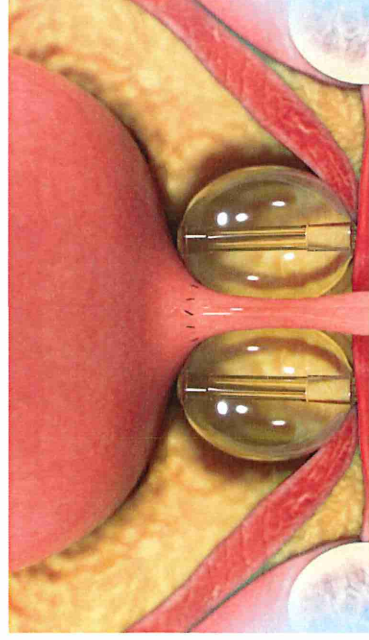
The ProACT™ Adjustable Continence Therapy for Men is a minimally invasive surgical treatment option for men who have stress incontinence as a result of a radical prostatectomy or transurethral resection of the prostate. The procedure to place the ProACT balloons on either side of the bladder neck is approximately 30 minutes in duration. Once the ProACT device is implanted, the device can be tailored to your individual needs. There is no need to manipulate the device at any time.

### After Prostatectomy



The prostate provides support to your bladder by restricting the flow of urine through two valves. After prostate surgery, the valves that prevent the flow of urine during times of strain can be damaged or removed.

### After ProACT™ Placement



The ProACT balloons are implanted where your prostate was removed to help replace the support it provided. The devices support the bladder by providing pressure that helps keep the bladder outlet closed during moments of abnical activity

## Quick Facts

Over 10,000 patients have been implanted with ProACT.

ProACT is a minimally invasive, outpatient procedure. No overnight stay is required.

ProACT balloons are easily adjustable to help meet your needs.

The ProACT procedure is covered by Medicare.

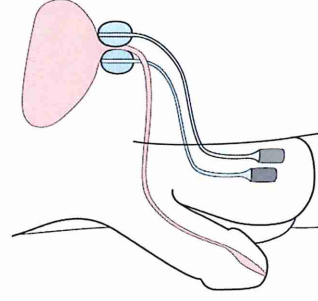
## About the ProACT Devices



Each ProACT implant is made of medical grade silicone and consists of a balloon and titanium filling port connected by tubing. The port is placed under the skin of the scrotum to be easily accessed by your urologist during adjustments. The ports are approximately the size of a No. 2 pencil eraser and are not noticeable by you.

## What makes this therapy adjustable?

At an adjustment visit in the office, your urologist will place a small needle through the skin into the port to add or remove fluids. Patients typically experience optimal results after 3-4 adjustment visits.



# ProACT™ Adjustable Continence Therapy for Men

Learn about a long-term, adjustable implant for male stress incontinence.



## Understanding Incontinence

Stress urinary incontinence is the involuntary loss of urine due to physical strain such as coughing, sneezing, or heavy lifting. Men have two bladder outlet valves (sphincters) to help prevent urine leakage. When the prostate gland is operated on, part or all of one sphincter is removed. If there is damage to the second sphincter or nerves during the prostatectomy, incontinence may result. The amount of incontinence you experience after prostate surgery may be different than someone else.

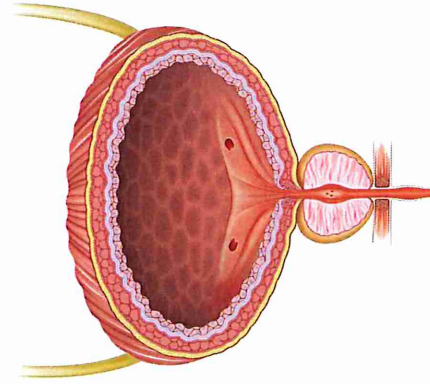
## Male Incontinence Statistics

Over 200,000 men are diagnosed with prostate cancer each year<sup>1</sup>

Post-prostatectomy incontinence ranges from 2% to nearly 60%<sup>2</sup>

32% of patients report pad use for incontinence one year after their surgery<sup>3</sup>

Over 80% of ProACT patients experience more than 50% improvement<sup>4</sup>



**Male anatomy prior to prostate surgery:  
The prostate helps prevent bladder leakage by  
providing an extra closure valve.**

## What are my treatment options?

A wide range of solutions are available to you depending on your level of incontinence. Absorbent pads and external collection devices may be your first line of defense in your recovery from prostate surgery. Some urologists may prescribe medications or inject bulking agents to temporarily assist in your continence, or men who require additional support for their incontinence, urologists may offer surgical treatment options such as the ProACT therapy, male sling, or the artificial urinary sphincter (AUS). Talk to your doctor about the best solution for your needs.

## Is the ProACT™ Therapy right for you?

The ProACT™ Therapy may be right for you if you still have incontinence 12 months after your prostate surgery and have not responded to conservative therapy.

This treatment option:

- Provides pressure and support to the bladder where your prostate was removed or resected
- Is adjustable in the office setting
- Involves a minimally invasive surgery
- Does not require patient manipulation

Risks include, but are not limited to: injury to the bladder or urethra during implantation procedure, movement of the devices from their intended location, damage to the tissue of the bladder or the urethra caused by the device, or infection.

**RECLAIM  
continence**

Control of your bladder is not in the past.

Regain confidence.

To learn more about the ProACT therapy,  
email us at:

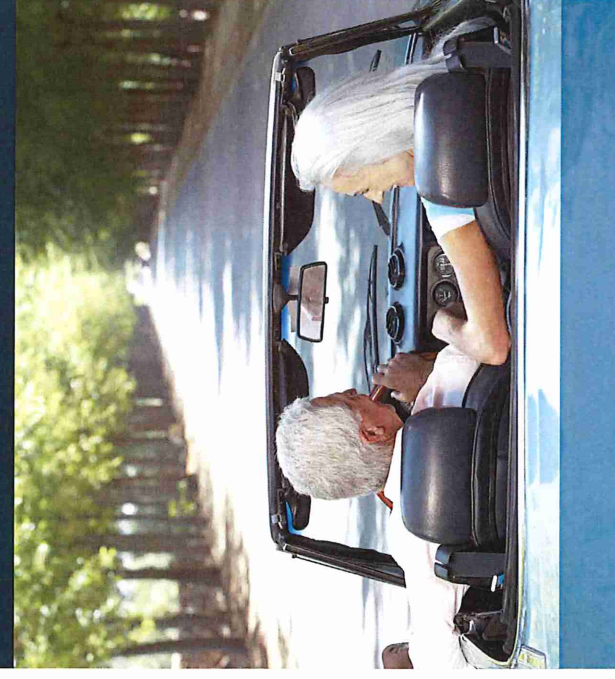
 [info@uromedica-inc.com](mailto:info@uromedica-inc.com)

Uromedica, Inc.  
1840 Berkshire Ln N  
Plymouth, MN 55441

[info@uromedica-inc.com](mailto:info@uromedica-inc.com)

PRO-US-20-02

1. Centers for Disease Control and Prevention. [www.cdc.gov](http://www.cdc.gov). Accessed September 8, 2020.
2. Abrams P, Cardozo L, Maggi A, Wein A. Incontinence. 6th Edition. Bristol UK: International Continence Society; 2017. 101-105.
3. Pearson DF, McLaren D, Feng Z, et al. 5-year urinary and sexual outcomes after radical prostatectomy: results from the prostate cancer outcomes study. *J Urol*. 2015;173(5):1701-1705.
4. Larson, T., Jhaveri, H., Yeung, L. Adjustable continence therapy (ProACT) for the treatment of male stress urinary incontinence: A systematic review and meta-analysis. *Neurology and Urology*. 2019. Nov;38(6): 2051-2059.



To find more information about the  
ProACT Therapy for Men, please visit:

[www.uromedica-inc.com](http://www.uromedica-inc.com)

Get more from life  
**UROMEDICA**

Uromedica is committed to developing safe, reliable, and efficacious products in order to continually improve the quality of life of those who use our products.